

Mola MT-400-B



Food waste disposer- cone for welding in bench. For continuous feeding of food waste.

Powerful food waste disposer with integrated control box

- ✓ Food waste disposer for welding in bench. Unique construction for compact installation
- ✓ Touch protection. Safety switch with quick release.
- ✓ Start/stop unit will be delivered completely with stainless collision protection for free placement
- ✓ Integrated control box with ready internal electrical installation

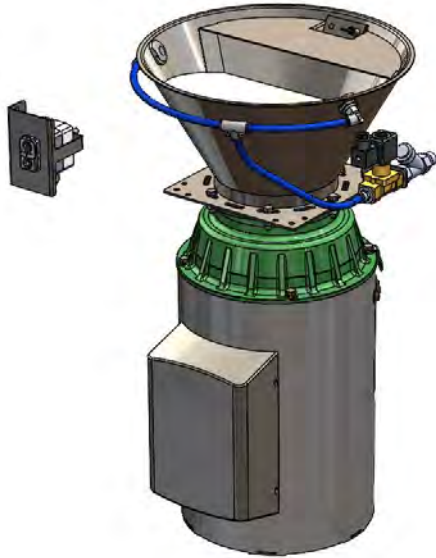


RENSA

Tel 08 541 303 60; Ritarslingan 14; 187 66 Täby; www.rensa.se

MT-400-B

MT-400-B. Cone shaped inlet Ø400 for welding in bench. Inlet provided with flushing nozzles, safety switch with quick release



Safety

All our models meet the requirements of the Machine Directive regarding safety and will be delivered with EG-declaration/CE-certificate. Through our unique construction, all our models are easy to install and secure to use.

Installation

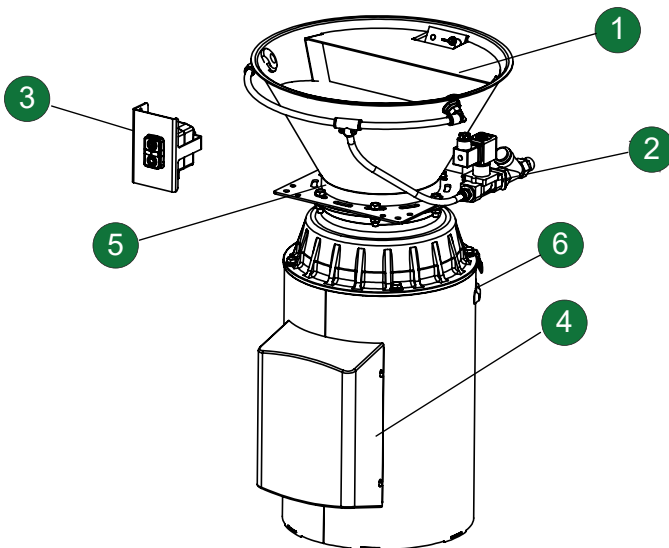
With integrated control box assembly and installation is simplified. The solution fits all sinks at the market without needing for rebuilding or adaptation

Cleaning

Mola MT-400 is made to facilitate the cleaning and to eliminate dirt pockets. The grinding unit is easily accessible via the quick release on the touch protection

Electricity

Connection cables to solenoid valve, touch protection and start stop unit are connected upon delivery so at the installation it's only needed to "pull out" desired length of the connection cable which makes the electrical installation simple and stylish.



Components:

- 1) Touch protection, safety cover
- 2) Flushing set including flushing nozzles, solenoid valve and line strainer.
- 3) Start/stop unit with integrated stainless collision protection for free placement.
- 4) Food waste disposer with integrated control box.
- 5) Cuterly trap, Multi magnetic block, optional. Mounted under the touch guard.
- 6) Pre-connected electrical connections. Electrical connections with contact for:
 - Solenoid valve
 - Interlock switch
 - Start/stop box
 - Power supply 2,5 meter connection cable

Sound level:

To keep the noise level at a absolute minimum Mola MT-400B can be delivered with splash guard with built in sound absorbent as option.

The splash guard/sound absorbant is easily demountable and reattached which gives the user swift access to grinder when needed.

The splash guard/sound absorbant is delivered with a resilient locking ring for easy installation.



Magnetic cuterly trap-Neodym

MT-400-B is delivered prepared for mounting a magnetic cuterly trap.

As option 4 magnetich cuterly trap will be delivered including mounting details.

The touch guard is then provided with powerful Neodym magnets to prevent cuterly and other metal objects from coming in contact with the grinder. The magnets are made as multi-magnets with a lot of magnets that together stops unwanted metal objects from falling into the disposer.



Integrated control box:

Mola model M-H-90/M-H 170 and MT-400-B will be delivered with integrated control box which simplifies mounting and installation. The solution fits all models on the market and designs of sinks without need for conversion or adaptation.

The control cabinet is delivered in version IP66 and is mounted directly on the electric motor and is protected by a stainless steel detachable protective cover.



Touch protection/Labyrinth

The touch protection also serves as a labyrinth as well. It prevents access to the grinding area during operation. With raised labyrinth you will easily reach the grinding unit for inspection and/or cleaning.

All parts interact to reach a high security level, low noise level, easy service, fast installation and a good working environment.

Flushing nozzles.

Two flushing nozzles are mounted in the cone to add rinsing water when grinding.

The nozzles are designed for low sound level.

Air gap

With the wide drain placed under the nozzles, creates an air gap according to EN1717. Air gap ensures that dish washer or food waste can't exceed the level for the flushing nozzles.

The construction does not include protruding parts, which is why it is excellent to handle for example dish baskets on the bench, while at the same time the inlet is easier to clean.

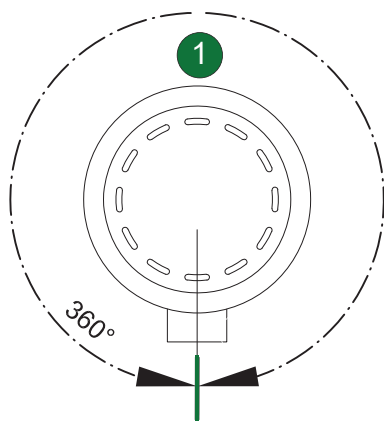


Connection to sewer

The drain connection can be placed optionally as below.

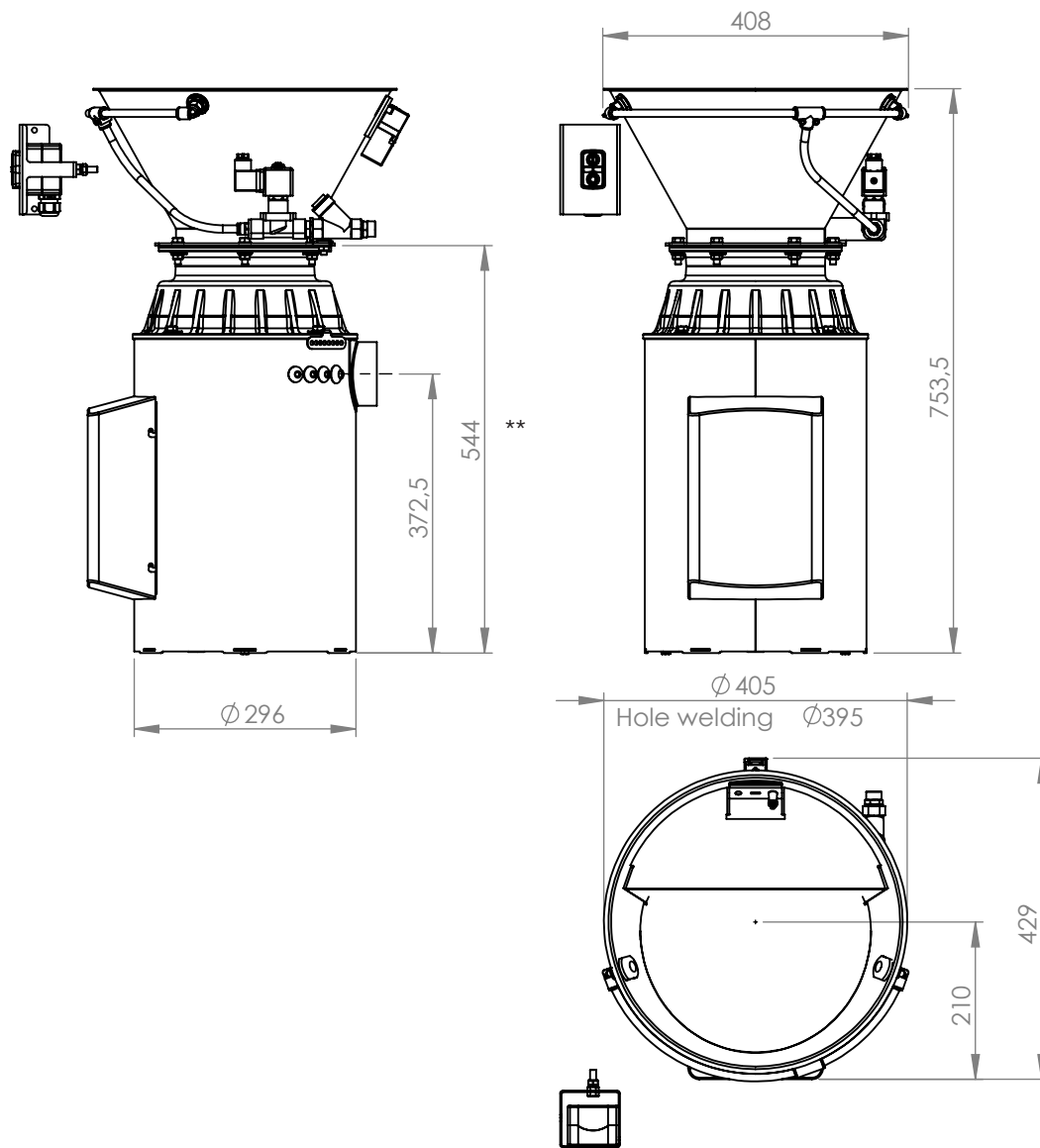
NOTE! With an integrated control box, however, the drain connection is advantageously placed straight back

(1). This is to facilitate access to the control box in event of service.



Dimensions MT-400-B

(All dimensions in mm unless otherwise stated)



Model specifications

Article number	MT-400-1,25	MT-400-2,5	MT-400-4,0	MT-400-5,5
RSK-number				
Capacity (number of servings/day) ***	100-500	500-1000	1000-1500	1500-...
Electrical power (kW)	1,25	2,5	4,0	5,5
Rated current 3-ph (A)	2,6	5,2	8,6	11,5
Size of grinding unit	Big	Big	Big	Big
Number of phases (standard/special)	3	3	3	3
Weight(kg)	48	55	60	65
Flushing water flow(liter/min)	10-18	10-18	10-18	10-18

** Model 1,25 and 2,5 can be delivered in a low-built version and the dimension between the connecting flange and lower edge will be 500mm

*** The capacity is largely determined by the type of food waste that a business produces and on whether food waste is ground, continuously for a longer time or larger quantities are added in a short time.

RENSA